



Grippers | Gripper fingers

Gripper fingers angle stroke 35°

Gripper fingers angle stroke 35°



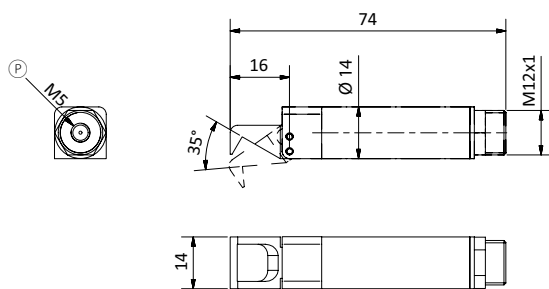
Product description

- > Gripper fingers in slim design for rear gripping such as in demolding of parts
- > Single-acting, spring return
- > Body and jaws made of high-strength aluminum alloy
- > Sensors for optional monitoring piston position (finger swung in or out)

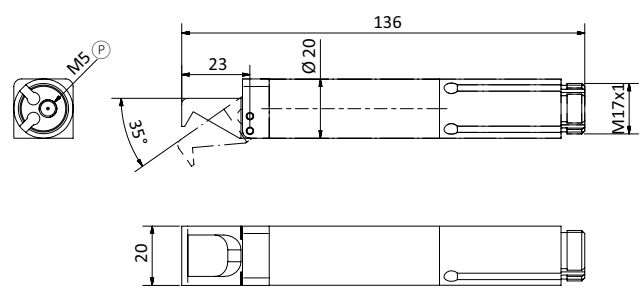
Technical data

Item no.	Principle of operation	Clamping- Ø [mm]	Angle stroke [°]	Sensor nut	Closing force [N]	Weight [g]	Accessories
GR04.035	Single-acting	14	35	--	23	25	Stop element GR04.036 Stop element GR04.034-H Locator pin GR04.037 Extension tube GR06.021A Sensor GR04.198 Sensor GR04.198/NPN Sensor mounting bracket GR04.038S
GR04.041	Single-acting	20	35	Yes	65	86	Stop element GR04.046 Stop element GR04.044-H Locator pin GR04.047 Extension tube GR06.022 Sensor GR04.198 Sensor GR04.198/NPN
GR04.045	Single-acting	20	35	--	65	65	Stop element GR04.046 Stop element GR04.044-H Locator pin GR04.047 Extension tube GR06.022

Dimensions



GR04.035



GR04.041